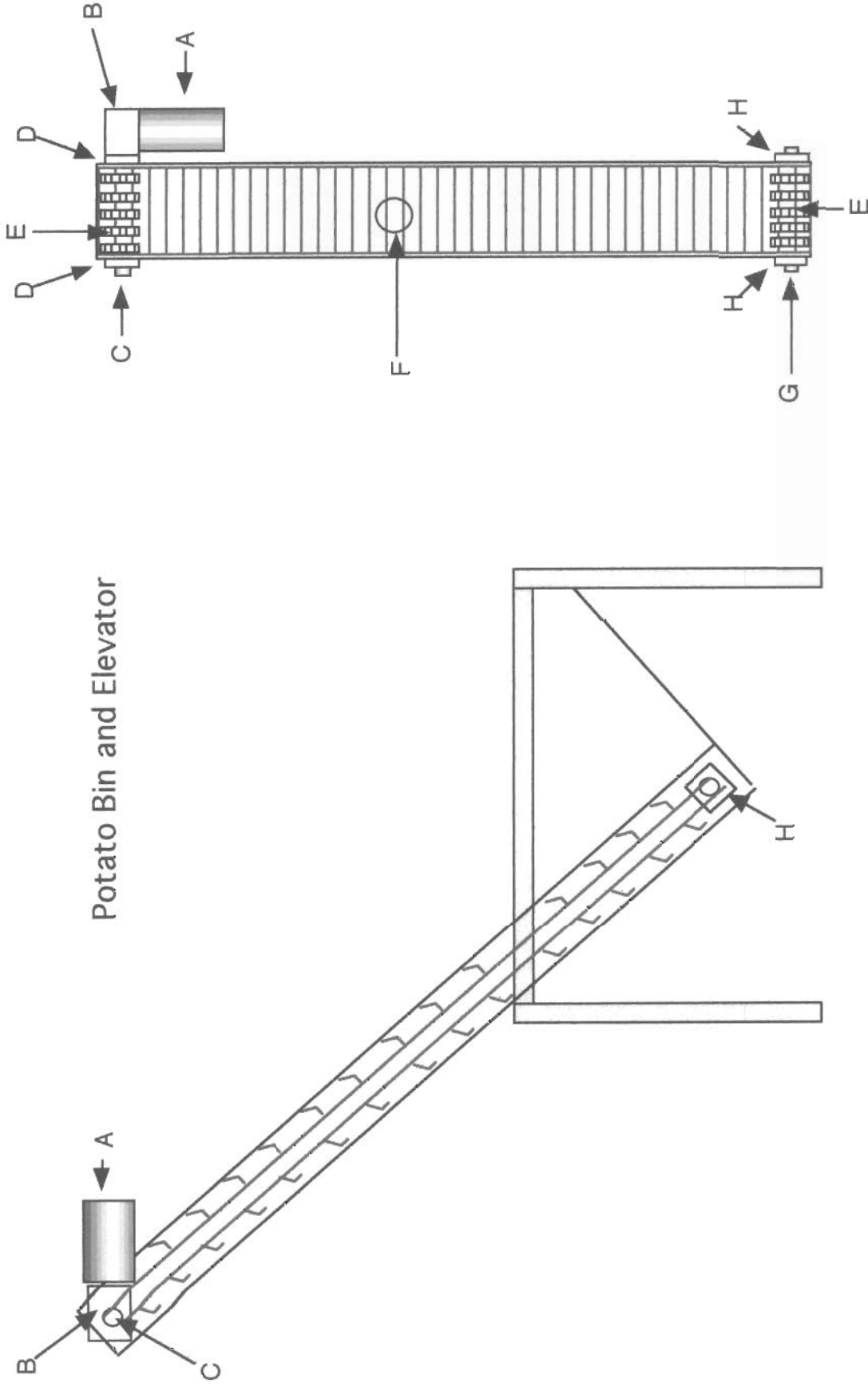


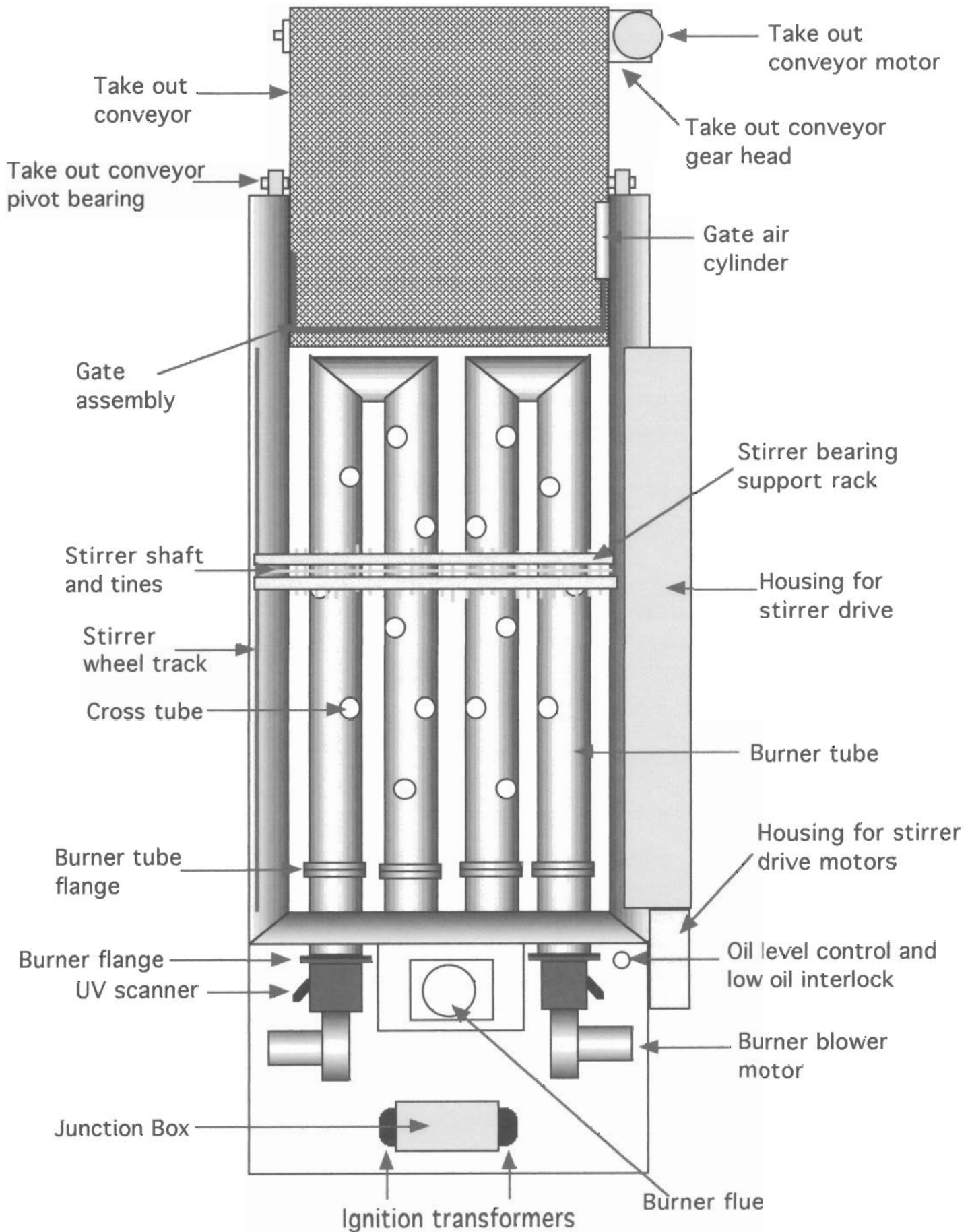
PARTS

If parts are not available locally, please call (001) 307-245-3779

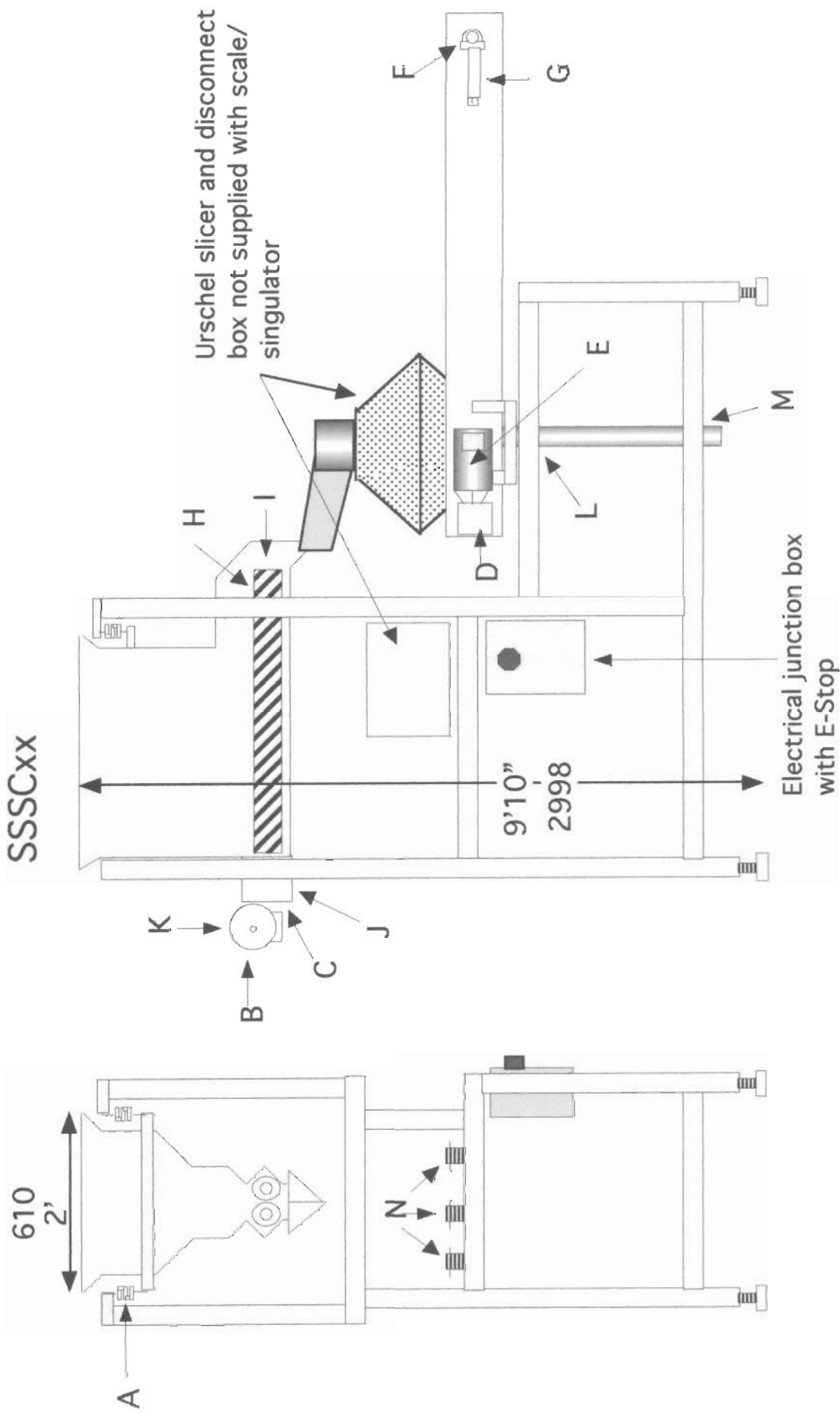
Potato Bin and Elevator



A	Baldor Stainless steel VSWDM-3554-1.5 HP	E	Intralox Series 800 -5.2 in. split metal sprocket with 1.5 in. square bore
B	Baldor SS-GHF-6026-AH	F	Intralox Series 800 Polypropylene-5/32 round hole, 3" scooped flights on 6" centers- 14.7 in. wide- 1.3 in indent each side
C	Machined stainless steel shaft	G	Machined stainless steel shaft
D	1-7/16" pillow block bearings	H	1" UHMW bearing

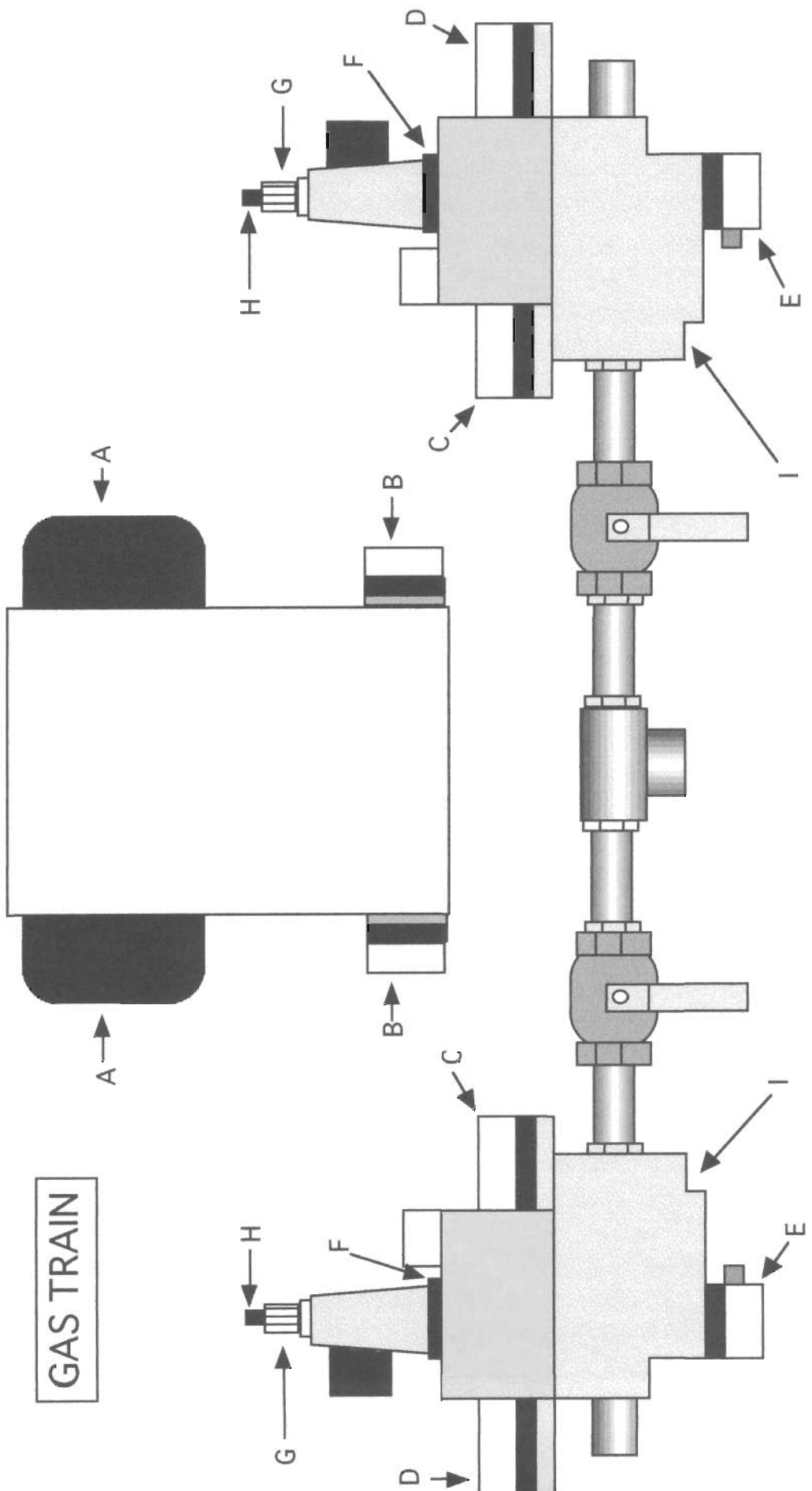


SSSCxx



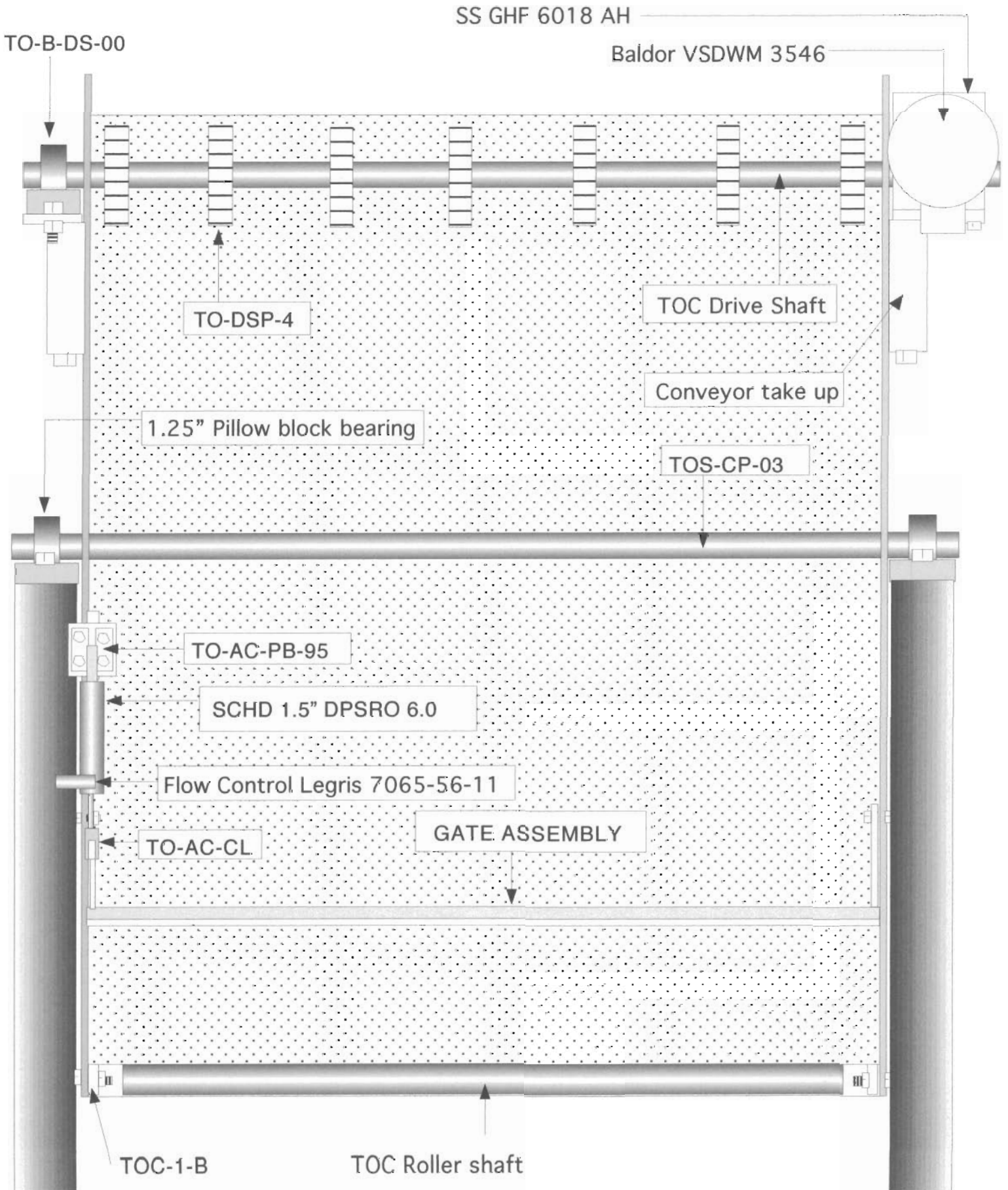
A	LC101-250	F	1 inch Pillow Block Bearing	K	Baldor Gear Head SSGHF2018 AH
B	Baldor VSWDM 3546	G	JD 1.5 x 4SS Take up	L	2 inch 4 bolt flange bearing
C	Boston YH32C Gears	H	UHMW 34 x 4 Feed rolls	M	2 inch pillow block bearing
D	Baldor SSGHF0518 AH	I	1 x 6 Singulator front bearing	N	Telco TI-IS-50 proximity sensors
E	Baldor VSWDM3546	J	1 inch 4 bolt flange bearing		

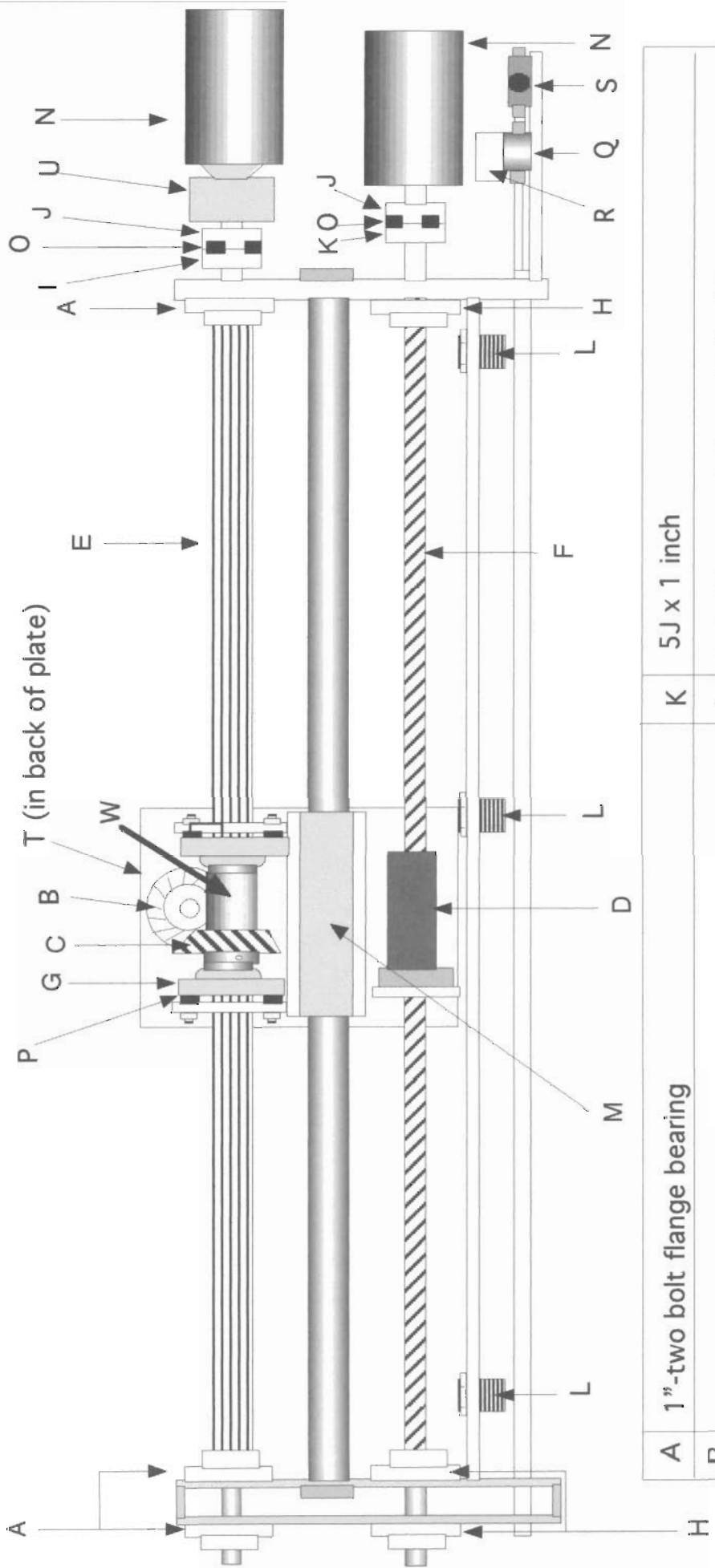
GAS TRAIN



A	Ignition Transformer	J
B	Dungs GAO-A2-4-3 Air proving switch	K
C	Dungs GAO-A2-4-5 Low gas switch	L
D	Dungs GAO-A2-4-3 High gas switch	M
E	CPI 400 Proof of valve closure switch	N
F	Pilot gas adjustment	O
G	Main burner gas adjustment	P
H	Main valve open speed control	Q
I	Dungs DMVZRDLE gas valve	R

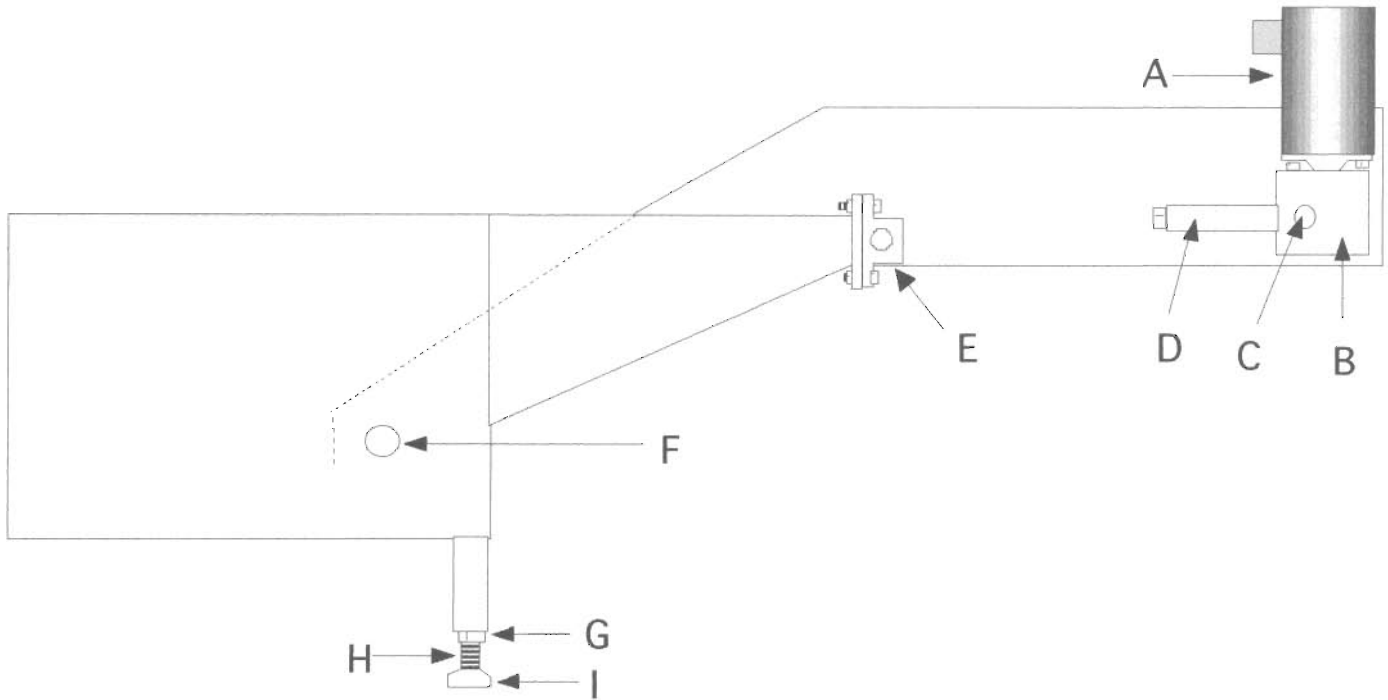
TAKE OUT CONVEYOR





A	1"-two bolt flange bearing	K	5J x 1 inch
B	LSA105Y-AR	L	Inductive proximity switch- 30 mm
C	SBN8280	M	Thompson-TWN 24-stirrer support bearing
D	Thompson Ball nut- SBN8280	N	Baldor WSWDM 3538 1 horsepower
E	Spline shaft- stirrer rotation	O	5JCM, 5JEM
F	Screw shaft- stirrer travel	P	JD Vibration isolators
G	JD 1.5" SPL-2BFL	Q	Valve=Grainger 3A426
H	1"- two bolt flange bearing	R	Coil=Grainger 3A440
I	5J x 1 inch	S	Flow valve ARO F01
J	5J x 3/4 inch	T	1 inch 2 bolt flange bearing

300 Take Out Conveyor



A	Baldor VSDWM 3546
B	SSGHF 6018 AH
C	TOC Drive shaft
D	Conv. take up
E	1.25" Pillow block bearing
F	TOC Roller shaft
G	.75" jam nut
H	.75" leveller
I	STS 4 Leveling pad
J	